

REV.	DESCRIPTION	DATE
A	RELEASE	Oct. 22, 2019
B	MODIFY PACKAGE	Jun. 08, 2020
C	MODIFY DRAW	Jul. 15, 2020
D	ADD DRAW DIM.	Jan. 04, 2021

### MATERIALS

- HOUSING : LCP (UL 94V-0), BLACK.
- TERMINAL : COPPER ALLOY,  
GOLD PLATED ON CONTACT AREA,  
GOLD FLASH PLATING ON SOLDER TAIL,  
NICKEL UNDERPLATED OVER ALL.
- MID PLATE : STAINLESS STEEL.
- SHELL : STAINLESS STEEL, NICKEL PLATING.

### SPECIFICATION

- CURRENT RATING : 5.0A FOR Vbus PIN,  
1.25A FOR Vconn PIN,  
0.25A FOR OTHER PINS.
- VOLTAGE RATING : 20V DC MAX.
- CONTACT RESISTANCE : 40mΩ.
- INSULATION RESISTANCE : 100MΩ MIN.
- DIELECTRIC WITHSTANDING VOLTAGE : 100 VAC MIN.
- OPERATING TEMPERATURE : -40°C TO +85°C.
- MATING FORCE : 5~20N.
- UNMATING FORCE : 8~20N.
- DURABILITY : 10,000 CYCLES.
- RECOMMENDED PROCESS :  
THE PEAK TEMPERATURE ON THE BOARD SHALL  
MAINTAIN 260°C.

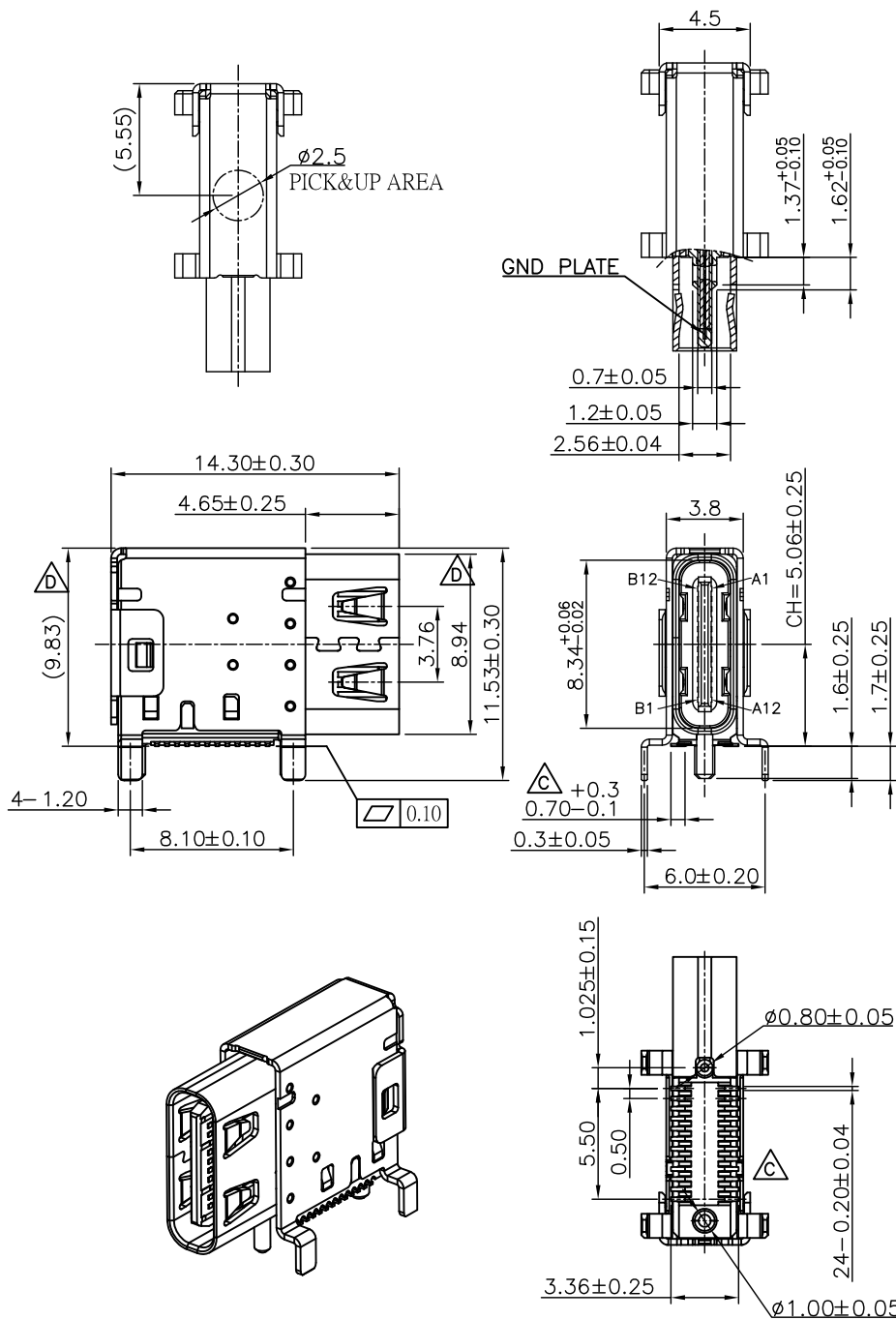
### PART NUMBER INFORMATION :

230F824-XN300S-H

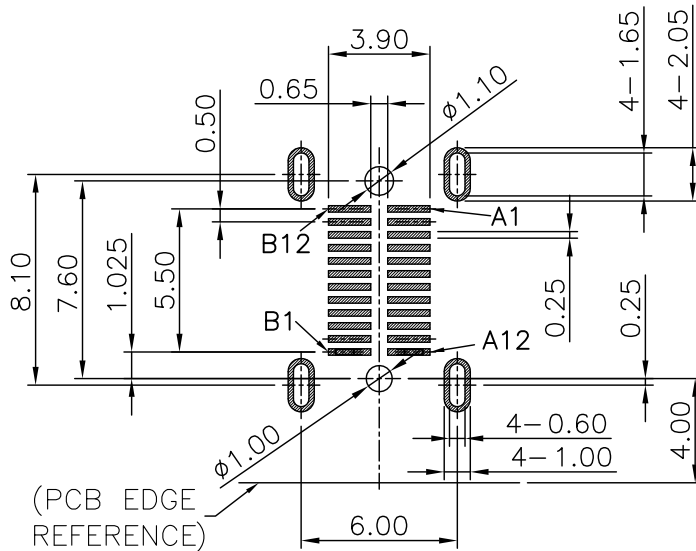
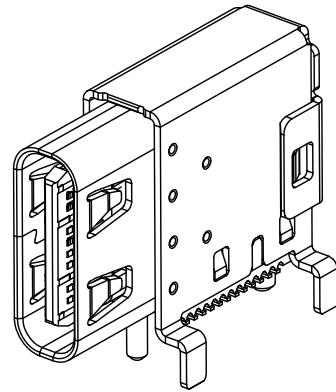
SERIES CODE ————  
SMT ————  
FEMALE ————  
USB TYPE-C ————  
NUMBER OF POSITIONS ————

HALOGEN FREE  
FOLLOW NUMBER  
CONTACT PLATING OPTION:  
0 : GOLD FLASH  
3 : 15u" GOLD  
6 : 30u" GOLD

GENERAL TOLERANCE		DRAWER		<b>INMO</b> 东莞市英墨电子有限公司 INMO Electronics Co.,Ltd	
DIM.	0. = ±X.XX .0 = ±0.30 .00 = ±0.20 .000 = ±0.15	CHECK			
ANG.	.0° = ±3° .00° = ±1°	APP'D		NAME	
3rd ANGLE PROJECTION		PRODUCT SPEC.		USB TYPE-C 24PIN FEMALE UPRIGHT TYPE, GEN2	
UNITS : mm		<b>CONFIDENTIAL</b>		PART NO. 230F824-XN300S-H	
SCALE	SIZE	SHEET	REV.	C NO.	
NONE	A4	1 OF 3	D	12029	



REV.	DESCRIPTION	DATE
A	RELEASE	Oct. 22, 2019
B	MODIFY PACKAGE	Jun. 08, 2020
C	MODIFY DRAW	Jul. 15, 2020
D	ADD DRAW DIM.	Jan. 04, 2021



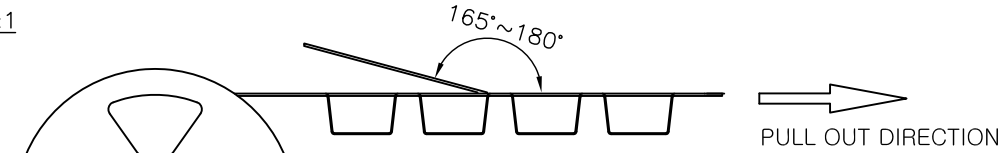
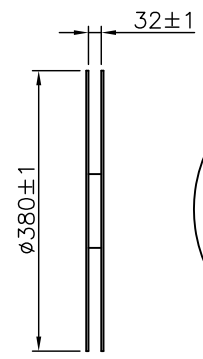
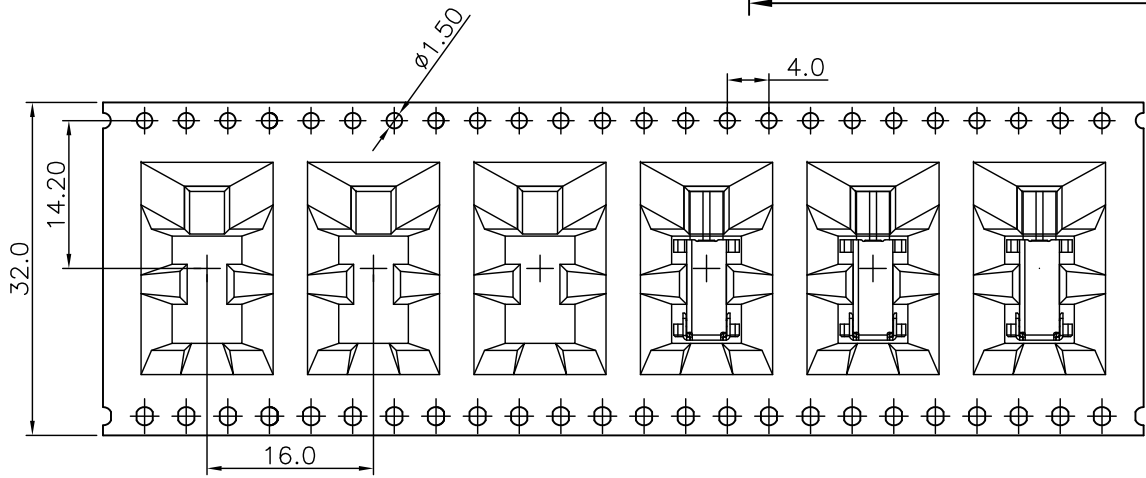
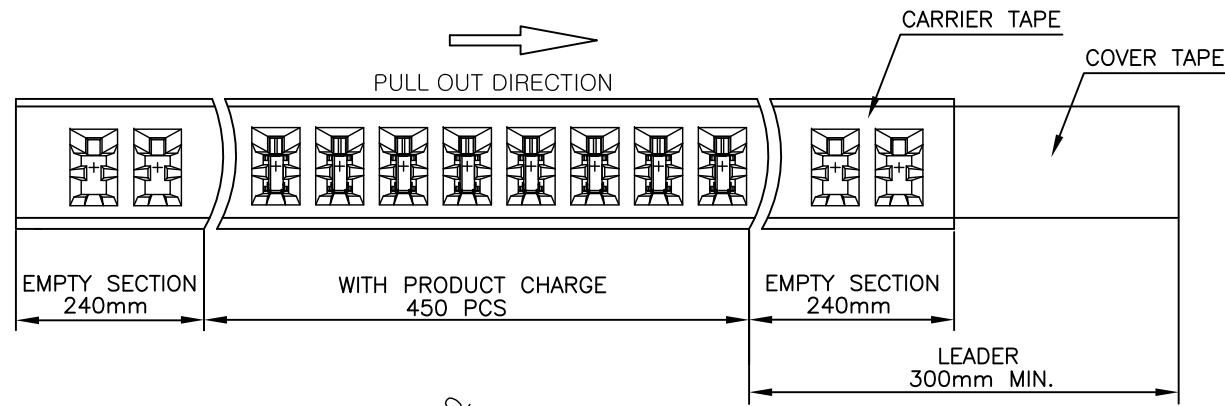
RECOMMENDED P.C.B LAYOUT  
TOLERANCE  $\pm 0.05\text{mm}$  (TOP VIEW)

PIN ASSIGNMENT:

PIN	Signal Name	PIN	Signal Name
A1	GND	B12	GND
A2	SSTXp1	B11	SSRXp1
A3	SSTXn1	B10	SSRXn1
A4	Vbus	B9	Vbus
A5	CC1	B8	SBU2
A6	Dp1	B7	DN2
A7	Dn1	B6	DP2
A8	SBU1	B5	CC2
A9	Vbus	B4	Vbus
A10	SSRXn2	B3	SSTXn2
A11	SSRXp2	B2	SSTXp2
A12	GND	B1	GND

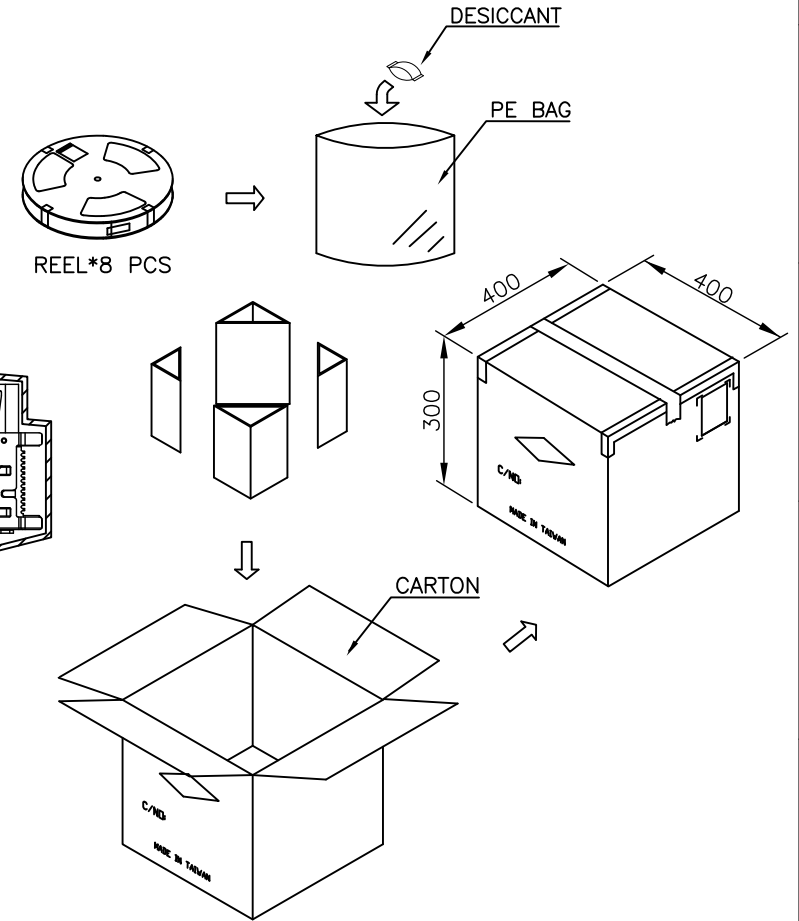
GENERAL TOLERANCE		DRAWER <i>LLJ</i>		<b>INMO</b> 东莞市英墨电子有限公司 INMO Electronics Co.,Ltd	
DIM.	0. = $\pm X.XX$ .0 = $\pm 0.30$ .00 = $\pm 0.20$ .000 = $\pm 0.15$	CHECK <i>ERP</i>	APP'D <i>ALAN</i>		
ANG.	.0° = $\pm 5^\circ$ .00° = $\pm 1^\circ$	PACKAGE SPEC.	USB TYPE-C 24PIN FEMALE UPRIGHT TYPE, GEN2		
3rd ANGLE PROJECTION		CONFIDENTIAL		PART NO. 230F824-XN300S-H	
UNITS : mm	SCALE NONE	SIZE A4	SHEET 2 OF 3	REV. D	C NO. 12029

REV.	DESCRIPTION	DATE
A	RELEASE	Oct. 22, 2019
B	MODIFY PACKAGE	Jun. 08, 2020
C	MODIFY DRAW	Jul. 15, 2020
D	ADD DRAW DIM.	Jan. 04, 2021



**PACKAGE**

1. SIZE :  
 REEL :  $\phi 380 \times 32$  mm  
 CARTON :  $400 \times 400 \times 300$  mm (LxWxH)
2. QUANTITY :  
 450 PCS / REEL  
 8 REEL / CARTON = 3,600 PCS
3. MATERIAL :  
 CARRIER TAPE : PET, TRANSPARENT.  
 COVER TAPE : PE.



GENERAL TOLERANCE		DRAWER <i>LYJ</i>		<b>INMO</b> 东莞市英墨电子有限公司 INMO Electronics Co.,Ltd	
DIM.		CHECK <i>ERP</i>			
ANG.		APP'D <i>ALAN</i>		NAME	
3rd ANGLE PROJECTION		PACKAGE SPEC. -		USB TYPE-C 24PIN FEMALE UPRIGHT TYPE, GEN2	
UNITS : mm		<b>CONFIDENTIAL</b>		PART NO. 230F824-XN300S-H	
SCALE NONE	SIZE A4	SHEET 3 OF 3	REV. D	12029	C NO.